



< PREVIOUS ARTICLE

RETURN TO ARTICLE LIST

NEXT ARTICLE >



"Listening" To Signals Traveling Through Bridges For Diagnosing Damage

Clarkson University team develops information theoretic approach to "listen" to the signals travelling through bridges in order to detect and diagnose changes or damage -- a marriage of modern big data analytics with structural health monitoring

Article ID: 665636

Released: 29-Nov-2016 4:05 PM EST

Source Newsroom: American Institute of Physics (AIP)

Add to Favorites

[more news from this source](#)

Like 0

SHARE

MEDIA CONTACT
Available for logged-in reporters only

CITATIONS [Chat now!](#)

CHANNELS

Engineering, National
Infrastructure, Local -
Maryland, Local - DC Metro,
All Journal News, Mathematics

KEYWORDS

Engineering, structural analysis,
Bridges

Newswise — WASHINGTON, D.C., November 29, 2016 – A group of Clarkson University mathematicians and a civil engineer developed a passive and noninvasive approach to “listen” to a collection of relevant signals from bridges and other mechanical structures to diagnose changes or damage.

As the group reports this week in *Chaos*, from AIP Publishing, their approach involves installing accelerometer sensors at various locations along a bridge to measure how each small part of the bridge is disturbed in response to a truck driving across.

“Signals from sensors near the truck loading are relevant, but so are signals far away because they react as the bridge structure flexes under its load and the entire structure oscillates like a guitar string, but obviously more complicated,” said Erik M. Bollt, a W. Jon Harrington professor in the Department of Mathematics at Clarkson University, located in Potsdam, NY.

Accelerations serve as “a listening media to forces and accelerations travelling through the structure,” Bollt said. “Signals travelling through the structure are expected to change if the bridge undergoes a change, such as a crack within the structure or if some of the bolts holding it together are loosened deliberately.”

A central part of the group’s analysis is a data processing technique called “optimal mutual information interaction,” which was developed to identify significant direct interactions between individual components within a system.

“Our technique adopts ideas from information and communication theory and uses state-of-the-art statistical estimation routines,” said Jie Sun, an assistant professor in the Department of Mathematics at Clarkson University. “The key concept is to search for interactions that are most

relevant to the increase of predictability of bridge oscillations. If the bridge's structure has been altered due to damage or deformation, the details are expected to change, enabling us to detect the health status of the bridge."

The group's work stands out because it brings together two unique aspects to detect damage within bridges or other mechanical structures.

"One is the noninvasive and automated nature of the data collection process," Sun said. "The other is the data analytics tool we developed, which can infer direct information flow and significant interactions. By combining them, we're able to detect -- from only the data -- the presence of structural changes within the bridge as controlled and varied in our experiment."

Along the way, the three mathematicians involved found some interesting structural defects revealed by data analysis of significant interactions, which puzzled them for a long time because it just didn't make sense.

"Our analysis suggested a 'boundary' in the middle of the covered area where there is no apparent structural defect or pattern," Sun said. "After long discussions with our civil engineer collaborator, Kerop Janoyan, a professor of civil engineering at Clarkson University, we finally realized that we'd been confused all along because the covered area isn't the entire bridge in the experiment, but rather a one-third portion and the 'boundary' we discovered is precisely where there is a structural boundary -- some supporting structure underneath."

Bridges are ubiquitous, so it's important to be able to detect structural damage as early as possible to avoid disastrous outcomes. But detection of structural damage, which is often done manually, can be costly and in many cases isn't effective.

Since the group's work combines modern sensing technology with state-of-the-art data analytics tools to automate this process, "it can be used for early detection of structural changes and damage before requiring inspection by a human," Bollt said.

This approach can be used along with inexpensive instrumentation for all sorts of structures—from bridges to wind turbines, buildings to airplanes.

"Accelerometers are becoming so cheap that we find them even within cellphones, so this will become a data avalanche, serving as a marriage of modern big data analytics with structural health monitoring," Bollt said.

The group is now working to make their approach deployable.

"On the more theoretical side, we're building a database of bridge models that can be easily

simulated and tested via computers to calibrate parameters in the method, and we're also developing improved statistical estimators to produce more accurate results faster," Bollt said with Sun's agreement. "On the experimental side, we're collaborating with labs to test our methods for other structures, including airplane wings under various conditions."

####

The article, "Information Theoretical Noninvasive Damage Detection In Bridge Structures," is authored by Amila N. Sudu Ambededara, Jie Sun, Kerop Janoyan, and Erik M. Bollt. The article will appear in the journal Chaos on November 19, 2016 (DOI: 10.1063/1.4967920). After that date, it can be accessed at: <http://scitation.aip.org/content/aip/journal/chaos/26/11/10.1063/1.4967920>

ABOUT THE JOURNAL

Chaos is devoted to increasing the understanding of nonlinear phenomena in all disciplines and describing their manifestations in a manner comprehensible to researchers from a broad spectrum of disciplines.

[SEE ORIGINAL STUDY](#)

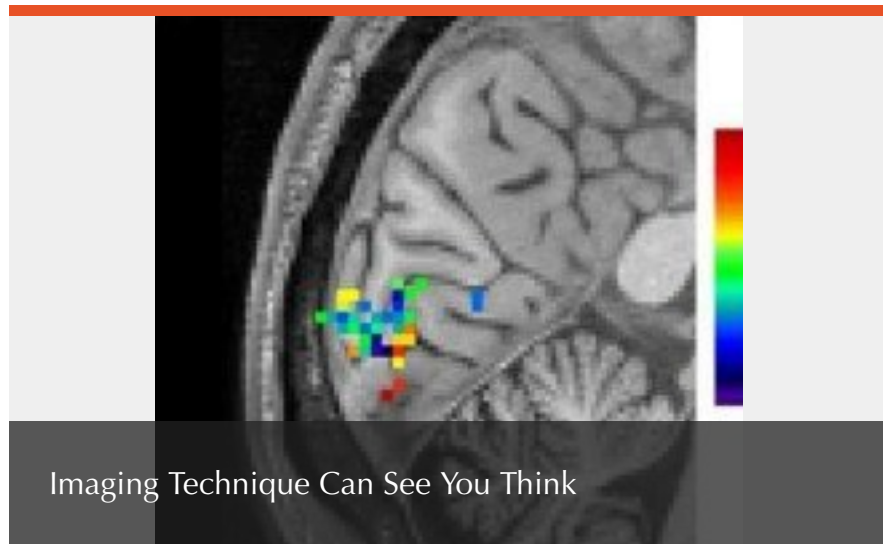
[SHARE ON FACEBOOK](#)

[SHARE ON TWITTER](#)

[COMMENTS](#) | [COMMENTING POLICY](#)

View All Latest News

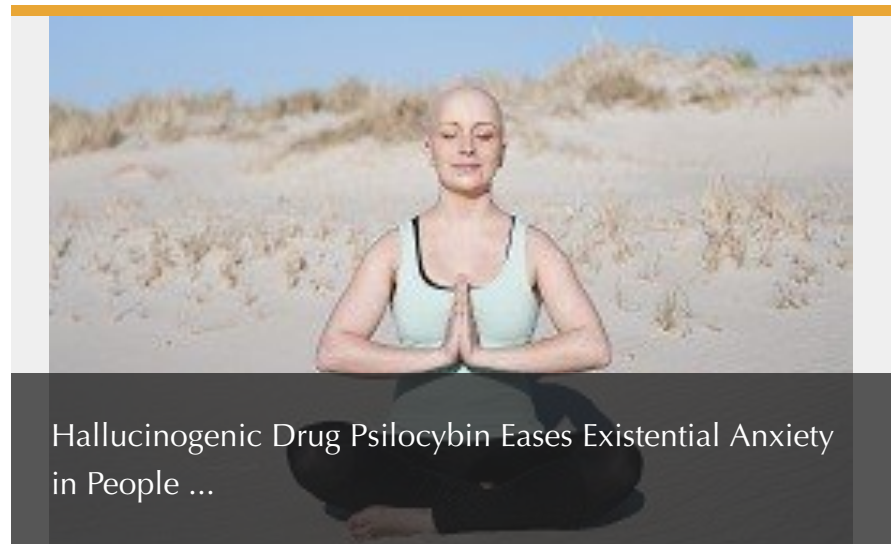
Science News



Imaging Technique Can See You Think

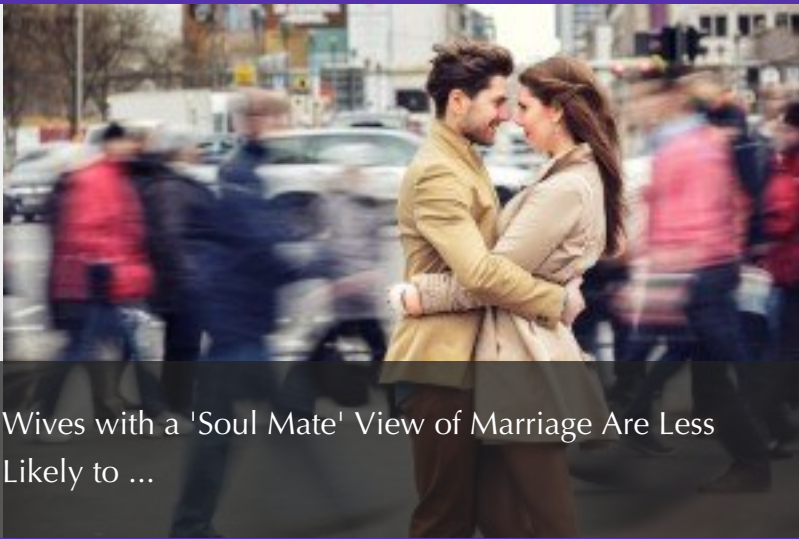
[View all Science News](#)

Medical News



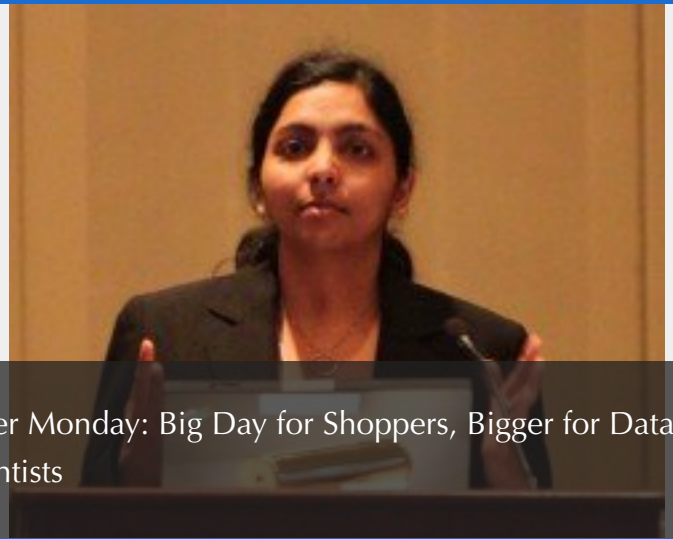
Hallucinogenic Drug Psilocybin Eases Existential Anxiety in People ...

[View all Medical News](#)



Wives with a 'Soul Mate' View of Marriage Are Less Likely to ...

[View all Life News](#)

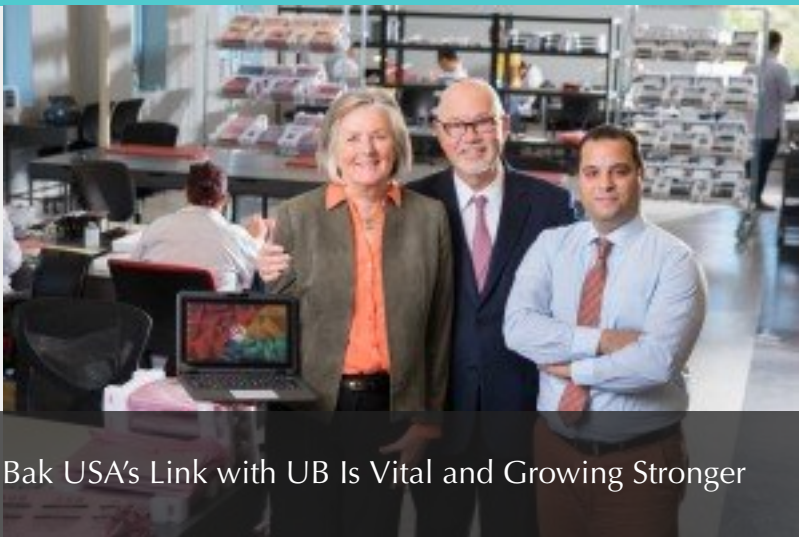


Cyber Monday: Big Day for Shoppers, Bigger for Data Scientists

[View all Business News](#)

Marketplace News

Expert Pitch



Bak USA's Link with UB Is Vital and Growing Stronger

[View all Marketplace News](#)



In Response to Great Smoky Mountain Fires: Virginia Tech Experts Can ...

[View all Expert Pitch](#)

©2016 Newswise, Inc 215 5th St. SW, Suite 100, Charlottesville VA 22903

434-296-9417

[Privacy Notice](#) [Terms of Service](#) [Contact Us](#)

